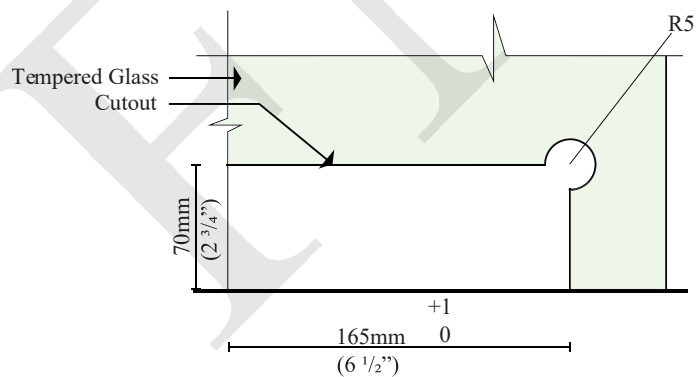
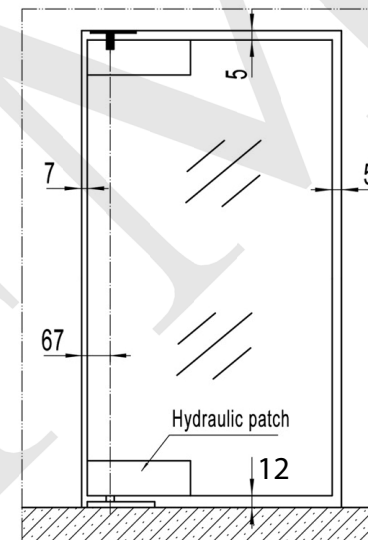


● Features:

- 1. Open angle: 140° double action
- 2. Door hold open section: 90° and 140°-120° (Optional)
- 3. Two speeds adjustable  
 Valve 1: 90°-0°  
 Valve 2: 30°-0°



● Keep the gaps as per drawing, make sure the top and bottom pivot center are well aligned.



| Model   | Max. door width (mm) | Max. door weight (kg) | Glass Thickness   | Application of rubber gasket |
|---------|----------------------|-----------------------|-------------------|------------------------------|
|         |                      |                       | Thickness (1.5mm) | Thickness (1.5mm)            |
| HYP-100 | ≤1000                | 100                   | 10mm              | 4                            |
|         |                      |                       | 12mm              | 4                            |

NOTES:

- PROPRIETARY AND CONFIDENTIAL - THE INFORMATION CONTAINED IN THIS DRAWING IS THE SOLE PROPERTY OF FMF GLASS HARDWARE. ANY REPRODUCTION IN PART OR AS A WHOLE WITHOUT THE WRITTEN PERMISSION OF FMF GLASS HARDWARE IS PROHIBITED.

PRODUCT NAME:

Standard-Duty Hydraulic Hinge- 100kg

PRODUCT MODEL NUMBER:

HYP-100

DWG NO.

HYP-100\_1

UNIT:

MM

DWG SIZE/SCALE

A4/NTS

**FMF GLASS  
HARDWARE**

REV.

1

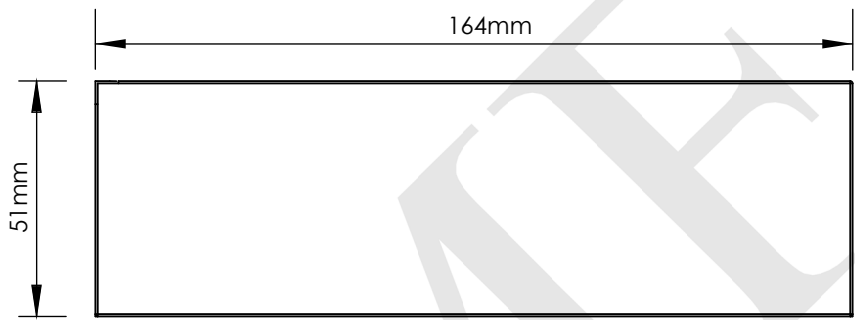
DATE:

01.22

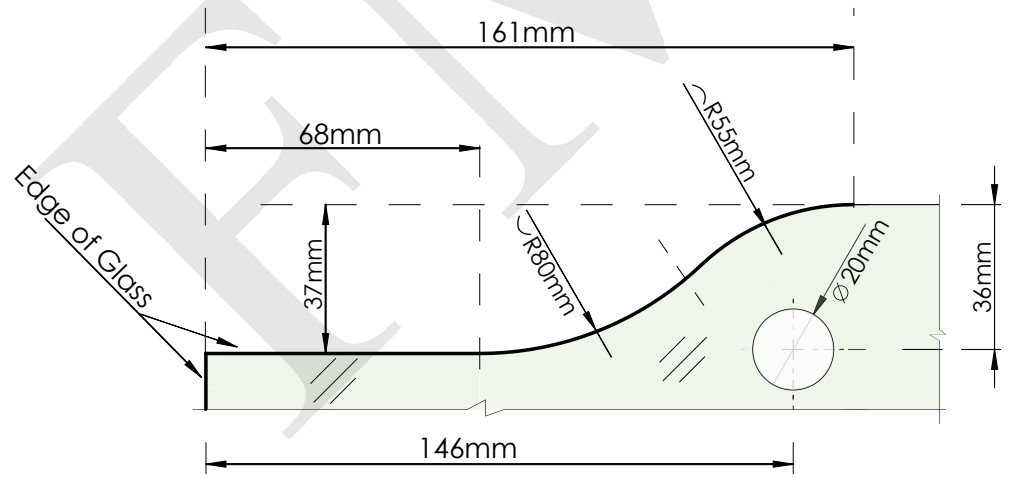
DRAWN BY:

FMF

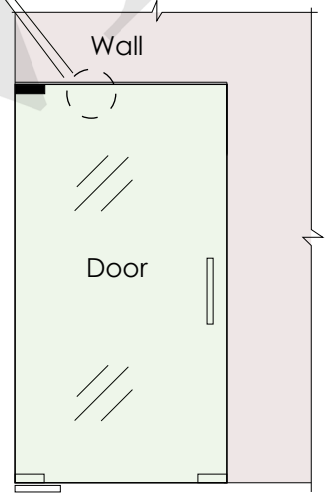
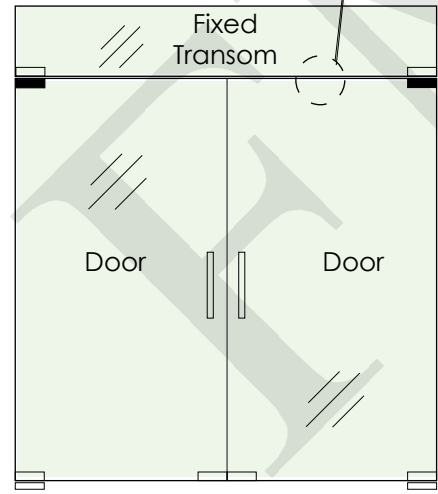
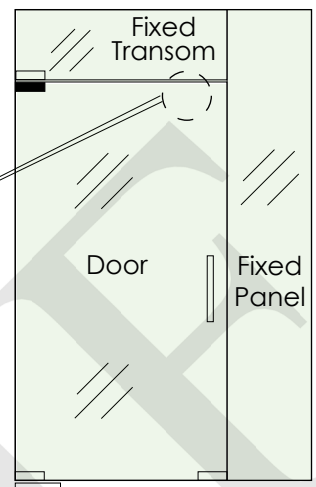
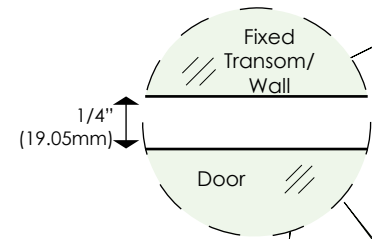
SHEET 1 OF 1



ELEVATION



GLASS FABRICATION



|   |   |                         |  |                           |                            |
|---|---|-------------------------|--|---------------------------|----------------------------|
| <b>NOTES:</b><br>- PROPRIETARY AND CONFIDENTIAL<br>- THE INFORMATION CONTAINED IN THIS DRAWING IS THE SOLE PROPERTY OF FMF GLASS HARDWARE. ANY REPRODUCTION IN PART OR AS A WHOLE WITHOUT THE WRITTEN PERMISSION OF FMF GLASS HARDWARE IS PROHIBITED. | PRODUCT NAME:<br><b>Patch fitting ceiling pivot</b> |                         | PRODUCT MODEL NUMBER:<br><b>PAT-02</b> |                           |                            |
|   | DWG NO.<br><b>PAT-02_1</b>                          | UNIT:<br><b>MM</b>      | DWG SIZE/SCALE<br><b>A4/NTS</b>        | <b>FMF GLASS HARDWARE</b> | REV. <b>1</b>              |
|   | DATE:<br><b>01.22</b>                               | DRAWN BY:<br><b>FMF</b> |  |                           | SHEET <b>1</b> OF <b>1</b> |